

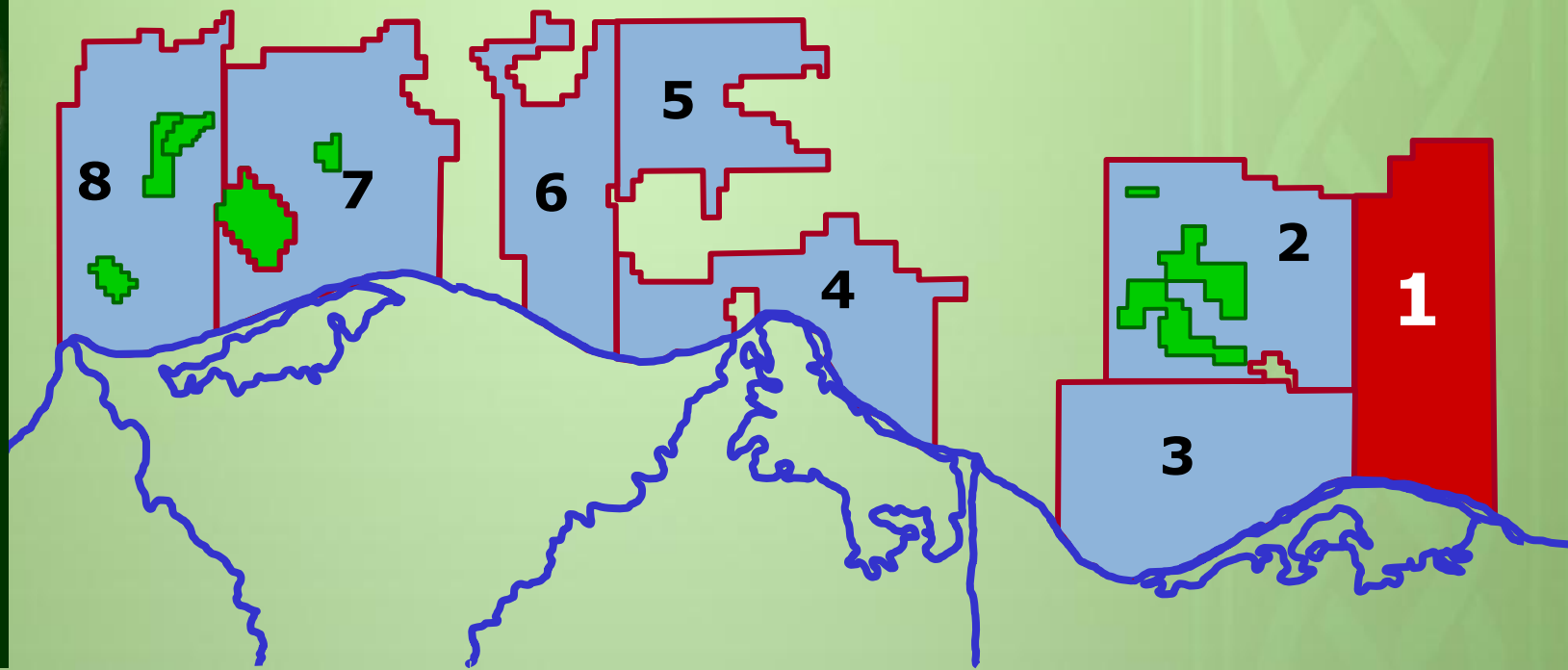


Ministry of Petroleum
and Mineral Resources



Block 1

West El Arish Offshore



BID 2015



Block Summary

Location:

West El Arish Offshore Block is located at approximately 34 km to the west of El Arish City and some 85 km to the east of Port Said City. It is situated directly to the north of Lake Bardawil with the Mediterranean shoreline forming its southern boundary. The block extends northward for approximately 70 km, attaining a maximum water depth of 550 m. The block is situated in an area with well-established infrastructure for gas-condensate production / transportation.

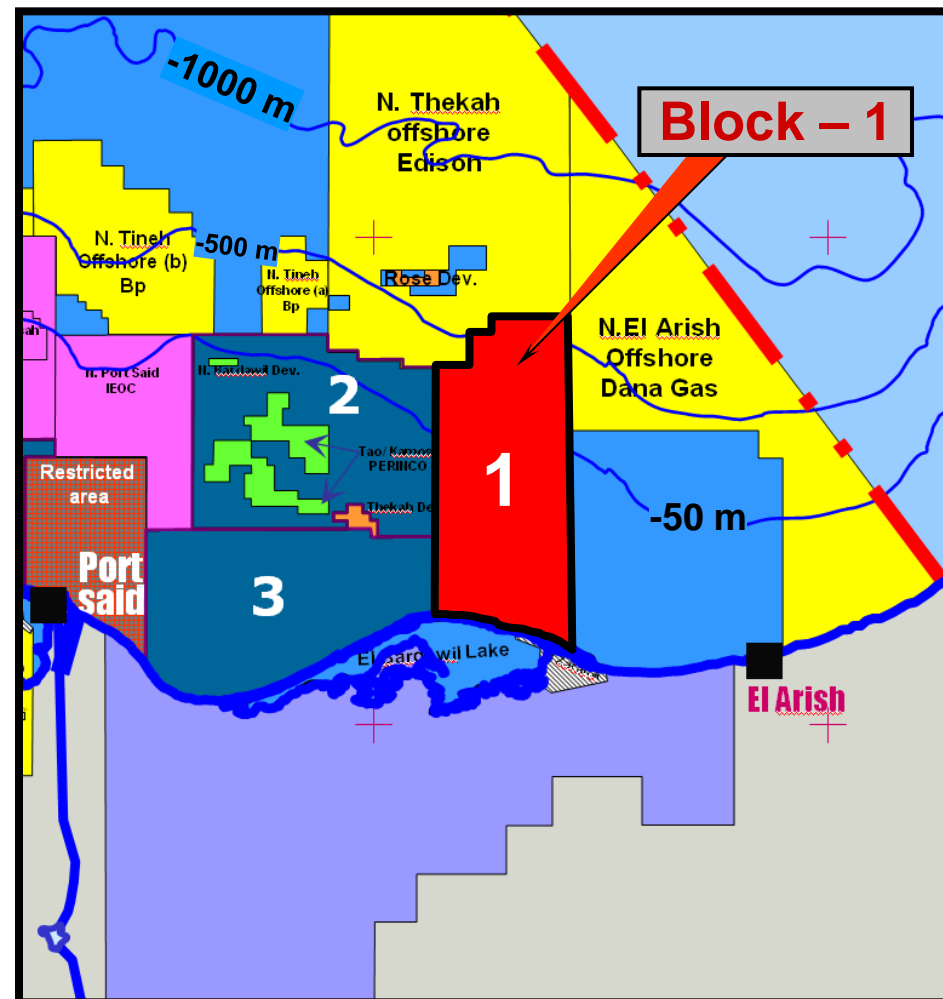
Total Area: 1797 Km²

Water Depth: 0 – 550 m

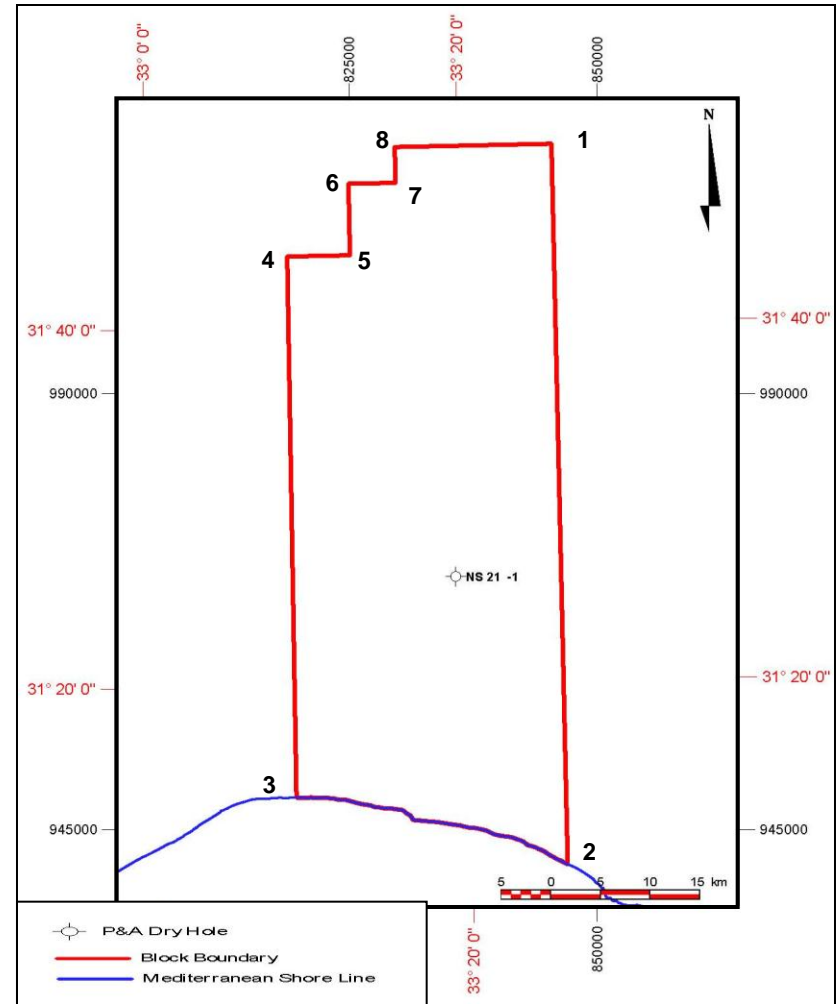
Previous Concessionaire: BP & IEOC/ THARWA

Nearby Fields & Discoveries:

West El Arish Offshore Block is located at approximately 21 km to the west of the Lower Cretaceous Mango-1 oil discovery and about 12.5 km to the east of the Pliocene Thekah gas field.



Block 1 West El Arish Offshore		
NO.	Lat.	Long.
1	31° 50' 00"	33° 26' 00"
2	Intersection of Long. 33° 26' 00" with Shore Line	33° 26' 00"
3	Intersection of Long. 33° 09' 00" with Shore Line	33° 09' 00"
4	31° 44' 00"	33° 09' 00"
5	31° 44' 00"	33° 13' 00"
6	31° 48' 00"	33° 13' 00"
7	31° 48' 00"	33° 16' 00"
8	31° 50' 00"	33° 16' 00"



Well Name/ Company	Spud Date/ Compl. Date	TD/ FM. @ TD	Lat./ Long	Status
NS 21-1 BP	02-Oct-85 31-Jan-86	4490 M L. Cretaceous	31° 25' 55.740" 33° 19' 18.185"	P&A Dry Hole

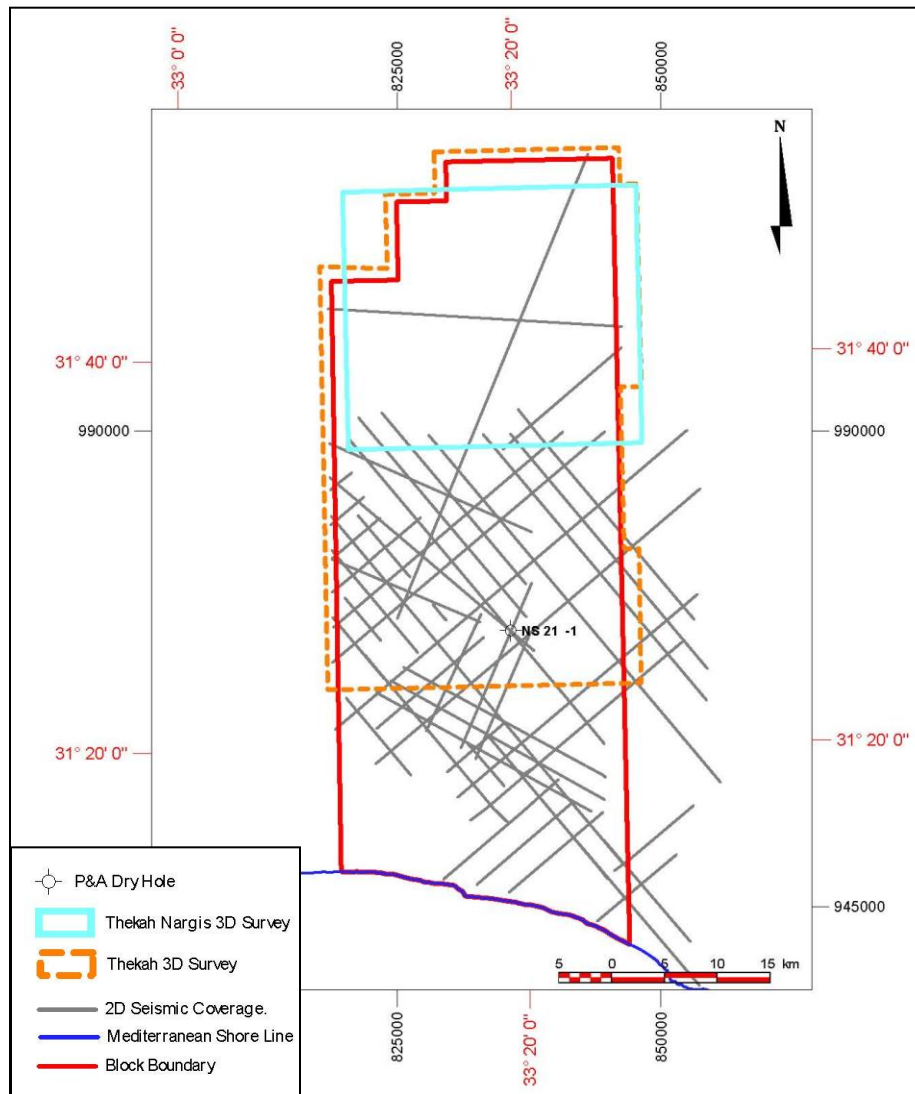


2D & 3D Seismic Coverage



2D Seismic Surveys (Segy Standard Format)		
Survey Name	Line-Km	No. of Seismic Lines
BG 93	110	6
BPNs 85	78	6
NS 86	15	1
NSI 81	606	29
BP_ND1&5	174	5
Total	983	47

3D Seismic Data (Segy Standard Format)	
Survey Name	Area (Sq. Km)
Thekah	1404
Thekah Nargis	679



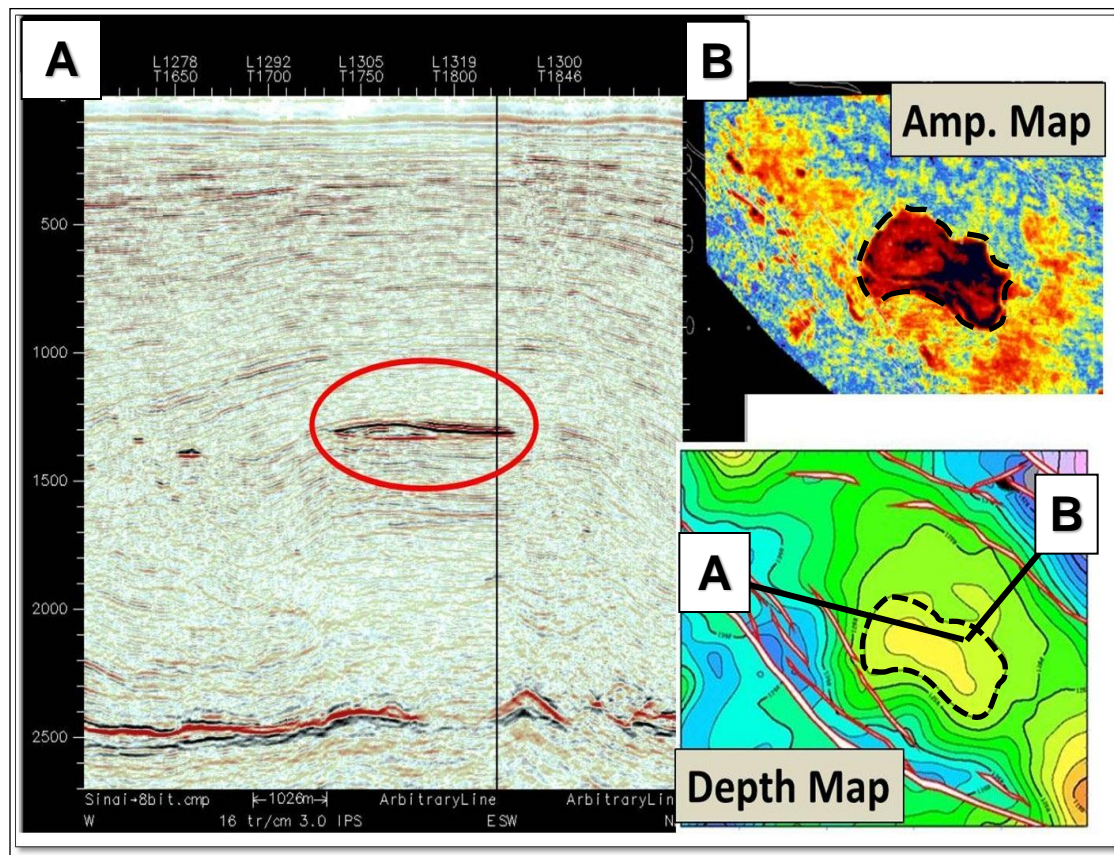


Block – 1 Prospectivity Examples

West El Arish Offshore Block is located Offshore North Sinai, at the eastern periphery of the Nile Delta Basin. The block is crossed, in its southern part, by the Pelusium Line. This line comprises a NE-SW shear lineament separating the Sinai Plate (onshore) to the south from the Levant Plate to the north. Offshore North Sinai constitutes the southern part of the Levant Plate and comprises the northern extension of the Syrian Arc inversion structures. These inversion structures comprise large buried anticlines initiated in the Late Mesozoic and continued slightly during the Cenozoic, and formed NE-trending asymmetrical folds. West El Arish Offshore Block is located at approximately 21 km to the west of the Lower Cretaceous Mango-1 oil discovery and about 12.5 km to the east of the Pliocene Thekah gas field. It also lies to the east of the Oligocene Tineh-1 oil discovery

Pliocene Play Concept:

- Source:** Massive shales of Kafr El Sheikh Fm.
- Reservoir:** Mainly represented by massive to laminated sands, lying up dip within a growth faulted block of Kafr El Sheikh Fm.
- Seal:** Massive shales of deep marine deposits provide the top and lateral seal for the target reservoirs.
- Trapping:** Combined structural/stratigraphic traps created/associated to listric growth faults.





Cretaceous and Oligo/Miocene Play Concept:

Source: The Late Jurassic carbonate and the Oligocene shale of the Tineh fm.

Reservoir: Sandstones of the Lower Cretaceous & Oligo/Miocene.

Seal: Top seal is provided by intra-formational shales and lateral seal is attained through sand-shale juxtaposition along sealing faults.

Trapping: Structural trap related to compressional phase of the Syrian arc system.

