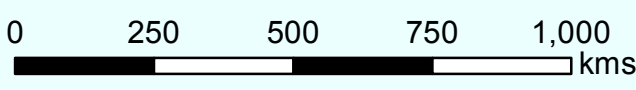
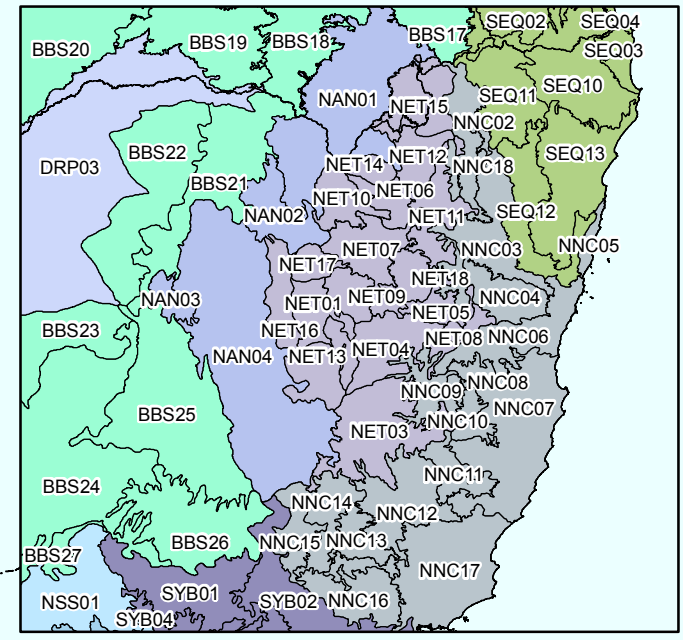
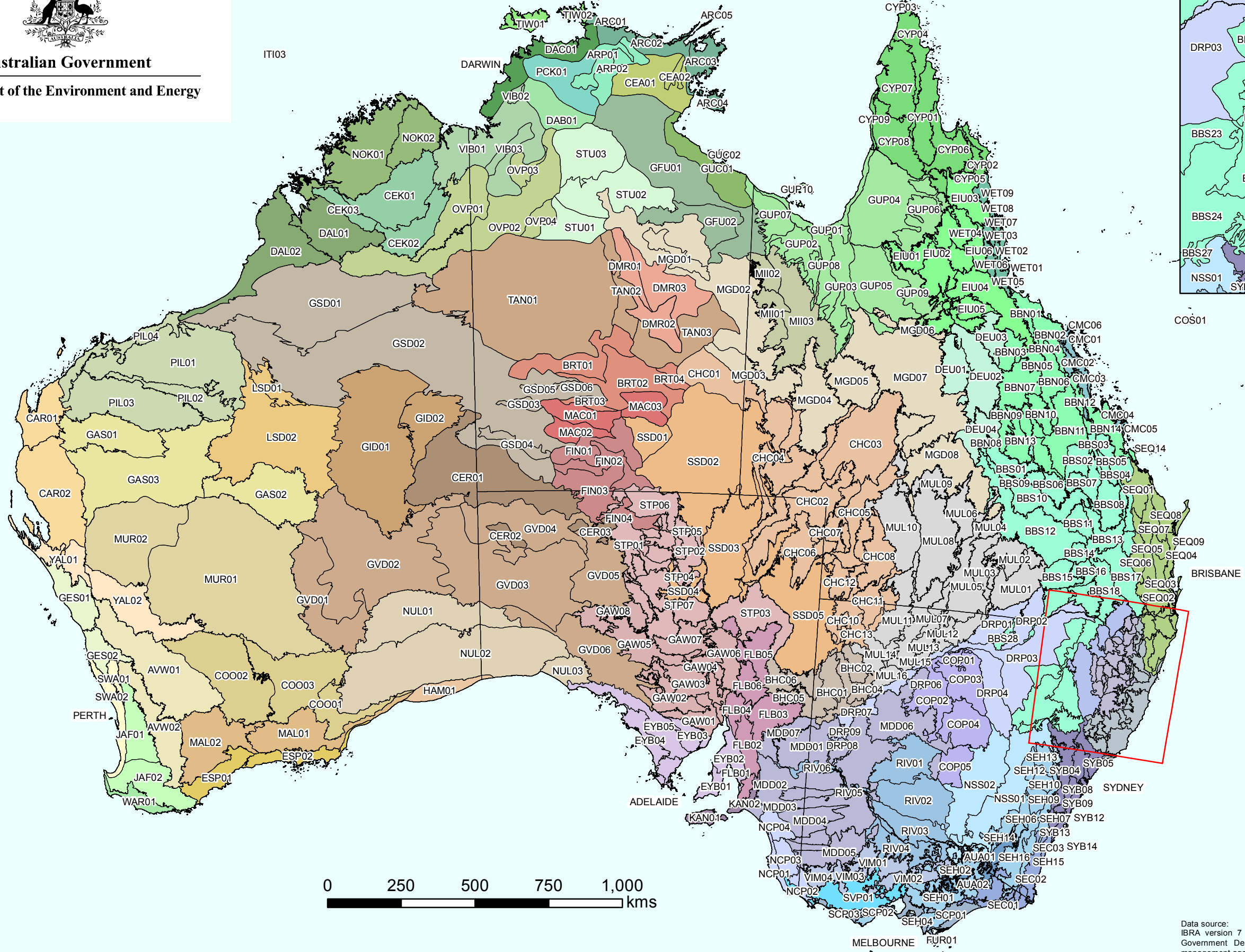




Australian Government

Department of the Environment and Energy



### Interim Biogeographic Regionalisation for Australia, Version 7

This map depicts the Interim Biogeographical Regionalisation for Australia (IBRA) version 7 subregions. IBRA subregions represent a landscape based approach to classifying the land surface, including attributes of climate, geomorphology, landform, lithology, and characteristic flora and fauna. Specialist ecological knowledge combined with appropriate regional and continental scale biophysical data sets were interpreted to describe these regions. 419 IBRA sub regions exist across Australia.

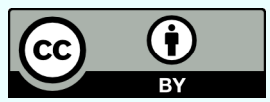
Data source: IBRA version 7 (2012) was developed through co-operative efforts of the Australian Government Department of the Environment and Energy and State/Territory land management agencies. Topographic Data - Australia - 1:10 million (c) Geoscience Australia, 1994. All rights reserved.

Caveats: Data used are assumed to be correct as received from the data suppliers.

(c) Commonwealth of Australia 2012  
Map produced by ERIN for the Australian Government Department of the Environment and Energy, Canberra, October 2016.

Projection: Albers Equal Area - Datum: GDA94

N:\NRS\IBRA\IBRA7\IBRA7\_maps



# Interim Biogeographic Regionalisation for Australia, version 7 and Sub-regions – Legend

<p><b>Arnhem Coast</b>            ARC01, Murgenerella            ARC02, Maningrida            ARC03, Nhulunbuy            ARC04, Groote            ARC05, Wessels</p>	<p><b>Central Arnhem</b>            CEA01, Wilton            CEA02, Parson</p>	<p>DRP03, Castlereagh-Barwon            DRP04, Bogan-Macquarie            DRP05, Louth Plains            DRP06, Wilcannia Plains            DRP07, Menindee            DRP08, Great Darling Anabranch            DRP09, Pooncarie-Darling</p>	<p>GUP02, Armraynald Plains            GUP03, Woondoola Plains            GUP04, Mitchell-Gilbert Fans            GUP05, Claraville Plains            GUP06, Holroyd Plain-Red Plateau            GUP07, Doomadgee Plains            GUP08, Donors Plateau            GUP09, Gilberton Plateau            GUP10, Wellesley Islands</p>	<p>MUL12, Warrego Sands            MUL13, Kerribree Basin            MUL14, White Cliffs Plateau            MUL15, Paroo Overflow            MUL16, Paroo-Darling Sands</p>	<p><b>Pine Creek</b>            PCK01, Pine Creek</p>	<p><b>Sturt Plateau</b>            STU01, Renehan            STU02, Newcastle            STU03, Birdum</p>
<p><b>Arnhem Plateau</b>            ARP01, Alligator            ARP02, Mainoru</p>	<p><b>Central Kimberley</b>            CEK01, Pentecost            CEK02, Hart            CEK03, Mount Eliza</p>	<p><b>Einasleigh Uplands</b>            EIU01, Georgetown-Croydon            EIU02, Kidston            EIU03, Hodgkinson Basin            EIU04, Broken River            EIU05, Undara-Toomba Basalts            EIU06, Herberton-Wairuna</p>	<p><b>Great Victoria Desert</b>            GVD01, Shield            GVD02, Central            GVD03, Maralinga            GVD04, Kintore            GVD05, Tallaringa            GVD06, Yellabinna</p>	<p><b>Murchison</b>            MUR01, Eastern Murchison            MUR02, Western Murchison</p>	<p><b>Pacific Subtropical Islands</b>            PSI01, Lord Howe Island            PSI02, Norfolk Island</p>	<p><b>Southern Volcanic Plain</b>            SVP01, Victorian Volcanic Plain            SVP02, Mount Gambier</p>
<p><b>Australian Alps</b>            AUA01, Snowy Mountains            AUA02, Victorian Alps</p>	<p><b>Central Ranges</b>            CER01, Mann-Musgrave Block            CER02, Watarru            CER03, Everard Block</p>	<p><b>Great Victoria Desert</b>            GVD01, Shield            GVD02, Central            GVD03, Maralinga            GVD04, Kintore            GVD05, Tallaringa            GVD06, Yellabinna</p>	<p><b>Hampton</b>            HAM01, Hampton</p>	<p><b>Nandewar</b>            NAN01, Nandewar Northern Complex            NAN02, Inverell Basalts            NAN03, Kaputar            NAN04, Peel</p>	<p><b>Riverina</b>            RIV01, Lachlan            RIV02, Murrumbidgee            RIV03, Murray Fans            RIV04, Victorian Riverina            RIV05, Robinvale Plains            RIV06, Murray Scroll Belt</p>	<p><b>Swan Coastal Plain</b>            SWA01, Dandaragan Plateau            SWA02, Perth</p>
<p><b>Avon Wheatbelt</b>            AVW01, Merredin            AVW02, Katanning</p>	<p><b>Channel Country</b>            CHC01, Toko Plains            CHC02, Sturt Stony Desert            CHC03, Goneaway Tablelands            CHC04, Diamantina-Eyre            CHC05, Cooper-Diamantina Plains            CHC06, Coongie            CHC07, Lake Pure            CHC08, Noccundra Slopes            CHC10, Core Ranges            CHC11, Bulloo            CHC12, Bulloo Dunefields            CHC13, Central Depression</p>	<p><b>Esperance Plains</b>            ESP01, Fitzgerald            ESP02, Recherche</p>	<p><b>Indian Tropical Islands</b>            ITI01, Christmas Island            ITI02, Cocos Islands            ITI03, Timor Sea Coral Islands</p>	<p><b>Naracoorte Coastal Plain</b>            NCP01, Bridgewater            NCP02, Glenelg Plain            NCP03, Lucindale            NCP04, Tintinara</p>	<p><b>Subantarctic Islands</b>            SAI01, Heard and McDonald Islands            SAI02, Macquarie Island</p>	<p><b>Sydney Basin</b>            SYB01, Kerrabee            SYB02, Hunter            SYB04, Wollemi            SYB05, Yengo            SYB06, Wyong            SYB07, Pittwater            SYB08, Cumberland            SYB09, Burragarang            SYB10, Sydney Cataract            SYB11, Moss Vale            SYB12, Illawarra            SYB13, Ettrema            SYB14, Jervis</p>
<p><b>Brigalow Belt North</b>            BBN01, Townsville Plains            BBN02, Bogie River Hills            BBN03, Cape River Hills            BBN04, Beucazon Hills            BBN05, Wyarra Hills            BBN06, Northern Bowen Basin            BBN07, Belyando Downs            BBN08, Upper Belyando Floodout            BBN09, Anakie Inlier            BBN10, Basalt Downs            BBN11, Isaac-Comet Downs            BBN12, Nebo-Connors Ranges            BBN13, South Drummond Basin            BBN14, Marlborough Plains</p>	<p><b>Central Mackay Coast</b>            CMC01, Whitsunday            CMC02, Proserpine-Sarina Lowlands            CMC03, Clarke-Connors Ranges            CMC04, Byfield            CMC05, Manifold            CMC06, Debella</p>	<p><b>Eyre Yorke Block</b>            EYB01, Southern Yorke            EYB02, St Vincent            EYB03, Eyre Hills            EYB04, Talia            EYB05, Eyre Mallee</p>	<p><b>Jarra Forest</b>            JAF01, Northern Jarrah Forest            JAF02, Southern Jarrah Forest</p>	<p><b>New England Tablelands</b>            NET01, Bundarra Downs            NET02, Beardy River Hills            NET03, Walcha Plateau            NET04, Armidale Plateau            NET05, Wongwibinda Plateau            NET06, Deepwater Downs            NET07, Glenn Innes-Guyra Basalts            NET08, Ebor Basalts            NET09, Moredun Volcanics            NET10, Severn River Volcanics            NET11, Northeast Forest Lands            NET12, Tenterfield Plateau            NET13, Yarrowyck-Kentucky Downs            NET14, Binghi Plateau            NET15, Stanthorpe Plateau            NET16, Eastern Nandewars            NET17, Tingha Plateau            NET18, Nightcap            NET19, Round Mountain</p>	<p><b>South East Coastal Plain</b>            SCP01, Gippsland Plain            SCP02, Otway Plain            SCP03, Warrnambool Plain</p>	<p><b>Tanami</b>            TAN01, Tanami Desert            TAN02, Wycliffe            TAN03, Sandover</p>
<p><b>Brigalow Belt South</b>            BBS01, Claude River Downs            BBS02, Wooralinda            BBS03, Boomer Range            BBS04, Mount Morgan Ranges            BBS05, Callide Creek Downs            BBS06, Arcadia            BBS07, Dawson River Downs            BBS08, Banana-Auburn Ranges            BBS09, Buckland Basalts            BBS10, Camarvon Ranges            BBS11, Taroom Downs            BBS12, Southern Downs            BBS13, Barakula            BBS14, Dulacca Downs            BBS15, Weribone High            BBS16, Tara Downs            BBS17, Eastern Darling Downs            BBS18, Inglewood Sandstones            BBS19, Moonie-Commorron Floodout            BBS20, Moonie-Barwon Interfluve            BBS21, Northern Basalts            BBS22, Northern Outwash            BBS23, Pilliga Outwash            BBS24, Pilliga            BBS25, Liverpool Plains            BBS26, Liverpool Range            BBS27, Talbragar Valley            BBS28, Narrandool</p>	<p><b>Cobar Penepplain</b>            COP01, Boorindal Plains            COP02, Barnato Downs            COP03, Canbelego Downs            COP04, Nymagee            COP05, Lachlan Plains</p>	<p><b>Finke</b>            FIN01, Henbury            FIN02, Finke River            FIN03, Tieyon            FIN04, Pedirka</p>	<p><b>King</b>            KIN01, King</p>	<p><b>Kanmantoo</b>            KAN01, Kangaroo Island            KAN02, Fleurieu</p>	<p><b>South East Corner</b>            SEC01, East Gippsland Lowlands            SEC02, South East Coastal Ranges            SEC03, Bateman</p>	<p><b>Tasmanian Central Highlands</b>            TCH01, Central Highlands</p>
<p><b>Ben Lomond</b>            BEL01, Ben Lomond</p>	<p><b>Cape York Peninsula</b>            CYP01, Coen-Yambo Inlier            CYP02, Starke Coastal Lowlands            CYP03, Cape York-Torres Strait            CYP04, Jardine-Pascoe Sandstones            CYP05, Battle Camp Sandstones            CYP06, Laura Lowlands            CYP07, Weipa Plateau            CYP08, Northern Holroyd Plain            CYP09, Coastal Plains</p>	<p><b>Flinders Lofty Block</b>            FLB01, Mount Lofty Ranges            FLB02, Broughton            FLB03, Olary Spur            FLB04, Southern Flinders            FLB05, Northern Flinders            FLB06, Central Flinders</p>	<p><b>Little Sandy Desert</b>            LSD01, Rudall            LSD02, Trainor</p>	<p><b>MacDonnell Ranges</b>            MAC01, McDonnell            MAC02, Watarrka            MAC03, Hartz Range</p>	<p><b>South Eastern Highlands</b>            SEH01, Highlands-Southern Fall            SEH02, Highlands-Northern Fall            SEH03, Otway Ranges            SEH04, Strzelecki Ranges            SEH06, Murrumbateman            SEH07, Bungonia            SEH08, Kanangra            SEH09, Crookwell            SEH10, Oberon            SEH11, Bathurst            SEH12, Orange            SEH13, Hill End            SEH14, Bondo            SEH15, Kybeyan-Gourock            SEH16, Monaro            SEH17, Capertee Uplands</p>	<p><b>Tasmanian Northern Midlands</b>            TNM01, Northern Midlands</p>
<p><b>Broken Hill Complex</b>            BHC01, Barrier Range            BHC02, Mootwingee Downs            BHC03, Scopes Range            BHC04, Barrier Range Outwash            BHC05, Bimbowrie            BHC06, Cumamona</p>	<p><b>Coral Sea</b>            COS01, Coral Sea</p>	<p><b>Furneaux</b>            FUR01, Wilsons Promontory            FUR02, Flinders</p>	<p><b>King</b>            KIN01, King</p>	<p><b>Mallee</b>            MAL01, Eastern Mallee            MAL02, Western Mallee</p>	<p><b>South Eastern Queensland</b>            SEQ01, Burnett-Curtis Hills and Ranges            SEQ02, Moreton Basin            SEQ03, Burringbar-Conondale Ranges            SEQ04, Sunshine Coast-Gold Coast Lowlands            SEQ05, Brisbane-Barambah Volcanics            SEQ06, South Burnett            SEQ07, Gympie Block            SEQ08, Burnett-Curtis Coastal Lowlands            SEQ09, Great Sandy            SEQ10, Scenic Rim            SEQ11, Woodenbong            SEQ12, Clarence Sandstones            SEQ13, Clarence Lowlands            SEQ14, Southern Great Barrier Reef</p>	<p><b>Tasmanian Northern Slopes</b>            TNS01, Northern Slopes</p>
<p><b>Burt Plain</b>            BRT01, Yuendumu            BRT02, Atartinga            BRT03, Mount Chapple            BRT04, Dulcie</p>	<p><b>Daly Basin</b>            DAB01, Daly Basin</p>	<p><b>Gascoyne</b>            GAS01, Ashburton            GAS02, Carnegie            GAS03, Augustus</p>	<p><b>MacDonnell Ranges</b>            MAC01, McDonnell            MAC02, Watarrka            MAC03, Hartz Range</p>	<p><b>Murray Darling Depression</b>            MDD01, South Olary Plain            MDD02, Murray Mallee            MDD03, Murray Lakes and Coorong            MDD04, Lowan Mallee            MDD05, Wimmera            MDD06, Darling Depression            MDD07, Braemer</p>	<p><b>Tasmanian South East</b>            TSE01, South East</p>	<p><b>Tasmanian Southern Ranges</b>            TSR01, Southern Ranges</p>
<p><b>Carnarvon</b>            CAR01, Cape Range            CAR02, Wooramel</p>	<p><b>Darwin Coastal</b>            DAC01, Darwin Coastal</p>	<p><b>Gawler</b>            GAW01, Myall Plains            GAW02, Gawler Volcanics            GAW03, Gawler Lakes            GAW04, Arcoona Plateau            GAW05, Kingoonya            GAW06, Torrens            GAW07, Roxby            GAW08, Commonwealth Hill</p>	<p><b>Mitchell Grass Downs</b>            MGD01, Sylvester            MGD02, Barkly Tableland            MGD03, Georgina Limestone            MGD04, Southwestern Downs            MGD05, Kynuna Plateau            MGD06, Northern Downs            MGD07, Central Downs            MGD08, Southern Wooded Downs</p>	<p><b>Northern Kimberley</b>            NOK01, Mitchell            NOK02, Berkeley</p>	<p><b>Tasmanian West</b>            TWE01, West</p>	<p><b>Tasmanian Western Ranges</b>            TWR01, Western Ranges</p>
<p><b>Dampierland</b>            DAL01, Fitzroy Trough            DAL02, Pindanland</p>	<p><b>Darling Riverine Plains</b>            DRP01, Culgoa-Bokhara            DRP02, Warrambool-Moonie</p>	<p><b>Geraldton Sandplains</b>            GES01, Geraldton Hills            GES02, Lesueur Sandplain</p>	<p><b>Murray Darling Depression</b>            MDD01, South Olary Plain            MDD02, Murray Mallee            MDD03, Murray Lakes and Coorong            MDD04, Lowan Mallee            MDD05, Wimmera            MDD06, Darling Depression            MDD07, Braemer</p>	<p><b>NSW North Coast</b>            NNC01, Washpool            NNC02, Cataract            NNC03, Dalmorton            NNC04, Chaelundi            NNC05, Yuraygir            NNC06, Coffs Coast and Escarpment            NNC07, Macleay Hastings            NNC08, Carrai Plateau            NNC09, Macleay Gorges            NNC10, Upper Manning            NNC11, Comboyne Plateau            NNC12, Mummel Escarpment            NNC13, Barrington            NNC14, Tomalla            NNC15, Ellerston            NNC16, Upper Hunter            NNC17, Karuah Manning            NNC18, Rocky River Gorge            NNC19, Guy Fawkes</p>	<p><b>Simpson Strzelecki Dunefields</b>            SSD01, Andado            SSD02, Simpson Desert            SSD03, Dieri            SSD04, Warriner            SSD05, Strzelecki Desert</p>	<p><b>Victoria Bonaparte</b>            VIB01, Keep            VIB02, Hermit Creek            VIB03, Angalarri</p>
<p><b>Derwent Murchison Ranges</b>            DMR01, Ashburton Range            DMR02, Davenport            DMR03, Barkly</p>	<p><b>Gulf Coastal</b>            GUC01, Limmen            GUC02, Pellews</p>	<p><b>Gibson Desert</b>            GID01, Lateritic Plain            GID02, Dune Field</p>	<p><b>Great Sandy Desert</b>            GSD01, McLarty            GSD02, Mackay            GSD03, Ehrenberg            GSD04, Amedeus            GSD05, Lake Bennett            GSD06, Lake Lewis</p>	<p><b>Nullarbor</b>            NUL01, Carlisle            NUL02, Nullarbor Plain            NUL03, Yalata</p>	<p><b>Stony Plains</b>            STP01, Breakaways            STP02, Oodnadatta            STP03, Murnpeowie            STP04, Peake-Dennison Inlier            STP05, Macumba            STP06, Witjira            STP07, Baltana</p>	<p><b>Victorian Midlands</b>            VIM01, Goldfields            VIM02, Central Victorian Uplands            VIM03, Greater Grampians            VIM04, Dundas Tablelands</p>
<p><b>Warren</b>            WAR01, Warren</p>	<p><b>Wet Tropics</b>            WET01, Herbert            WET02, Tully            WET03, Innisfail            WET04, Atherton            WET05, Paluma-Seaview            WET06, KIRRAMA-Hinchinbrook            WET07, Bellenden Ker-Lamb            WET08, Macalister            WET09, Daintree-Bloomfield</p>	<p><b>Yalgoo</b>            YAL01, Ediel            YAL02, Tallering</p>	<p><b>Wet Tropics</b>            WET01, Herbert            WET02, Tully            WET03, Innisfail            WET04, Atherton            WET05, Paluma-Seaview            WET06, KIRRAMA-Hinchinbrook            WET07, Bellenden Ker-Lamb            WET08, Macalister            WET09, Daintree-Bloomfield</p>	<p><b>Wet Tropics</b>            WET01, Herbert            WET02, Tully            WET03, Innisfail            WET04, Atherton            WET05, Paluma-Seaview            WET06, KIRRAMA-Hinchinbrook            WET07, Bellenden Ker-Lamb            WET08, Macalister            WET09, Daintree-Bloomfield</p>	<p><b>Wet Tropics</b>            WET01, Herbert            WET02, Tully            WET03, Innisfail            WET04, Atherton            WET05, Paluma-Seaview            WET06, KIRRAMA-Hinchinbrook            WET07, Bellenden Ker-Lamb            WET08, Macalister            WET09, Daintree-Bloomfield</p>	<p><b>Wet Tropics</b>            WET01, Herbert            WET02, Tully            WET03, Innisfail            WET04, Atherton            WET05, Paluma-Seaview            WET06, KIRRAMA-Hinchinbrook            WET07, Bellenden Ker-Lamb            WET08, Macalister            WET09, Daintree-Bloomfield</p>